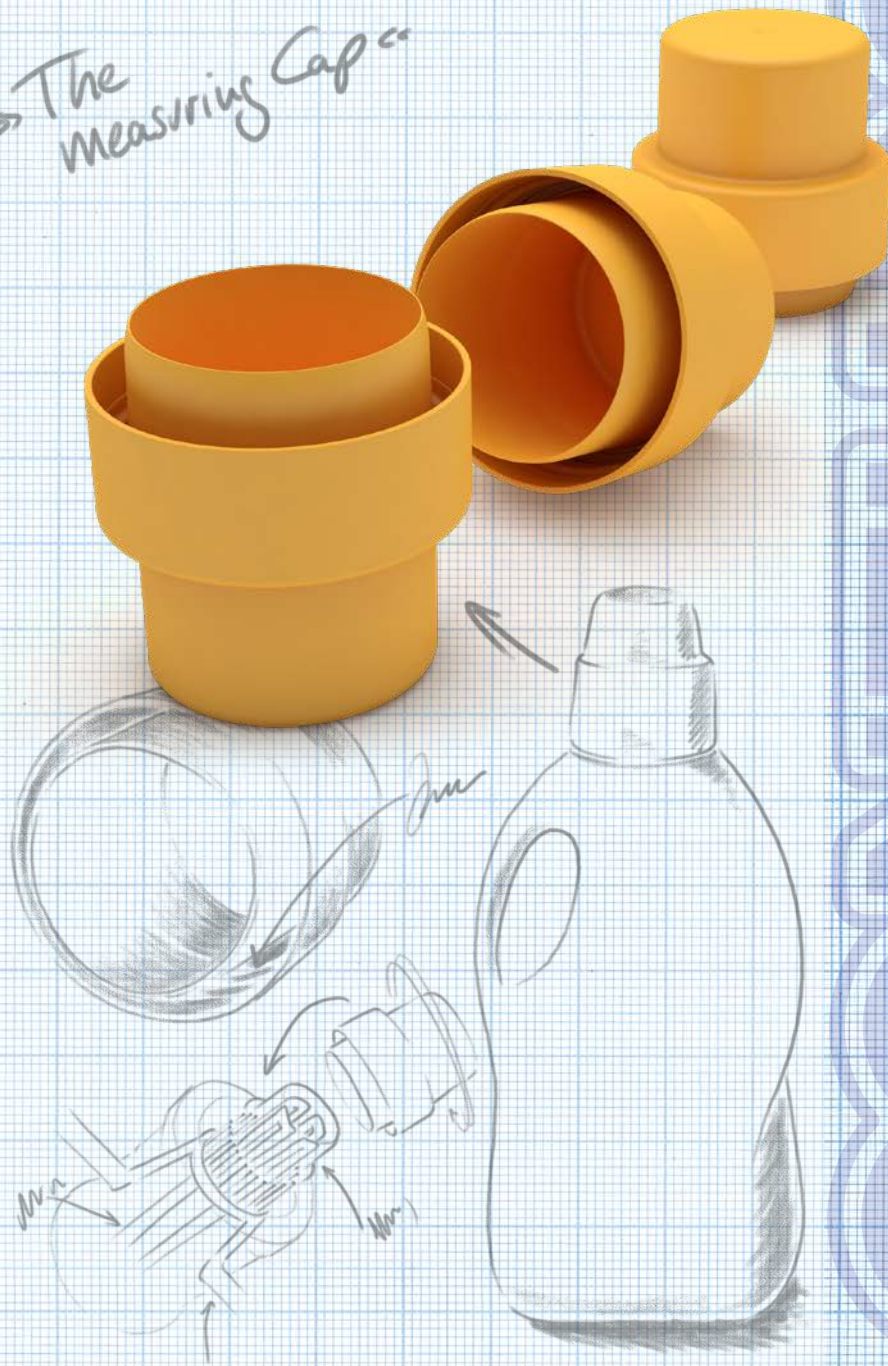


量液帽

→ The Measuring Cap



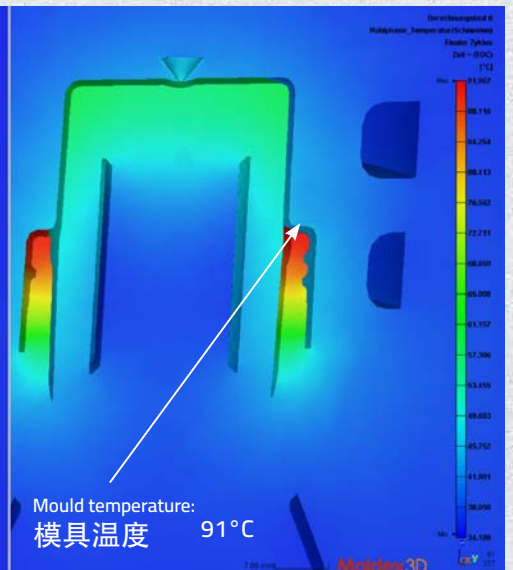
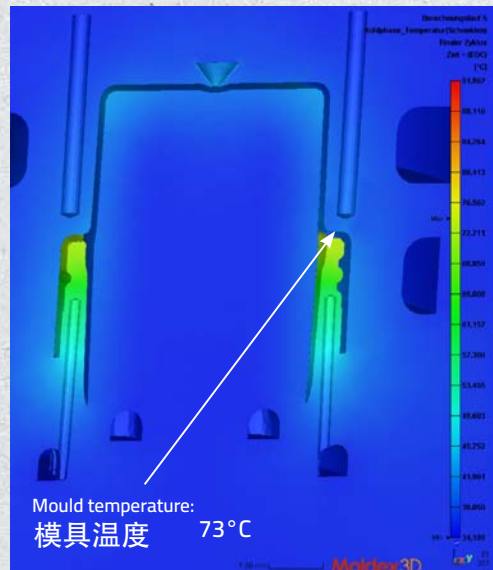
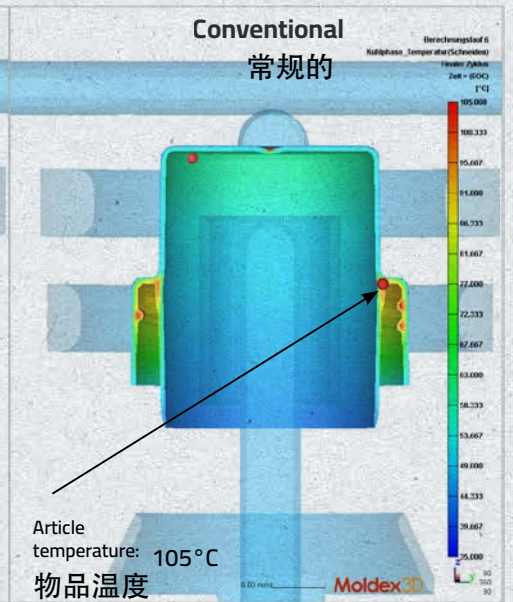
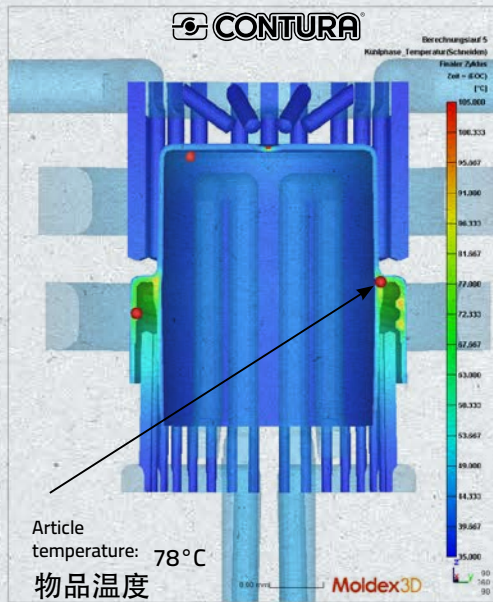
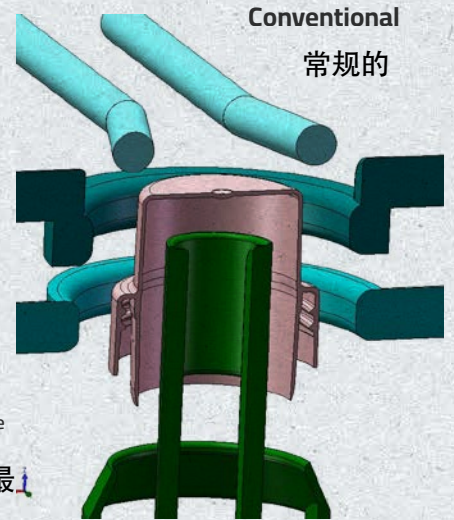
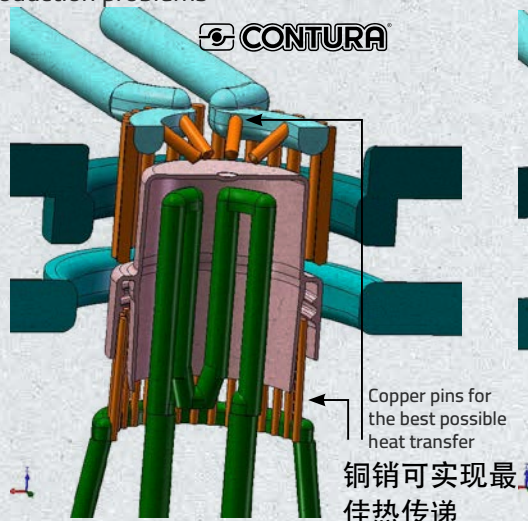
COMPTON

CASE STUDY

Simulations prior to production enabled the properties of the mould insert could be predicted exactly.

模拟生产可以准确预测模具镶件的性能。
- 尽可能消除生产问题

- Best possible elimination of production problems



Combination of variothermal process control and contour-following mould temperature control for particularly efficient production of large quantities.

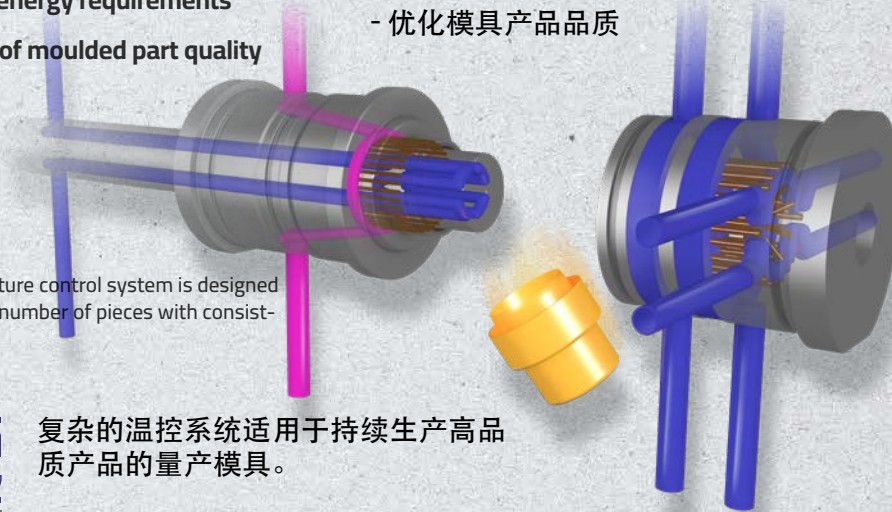
变温过程控制和随形冷却相结合，可实现高效的大批量生产。

The advantages of conformal cooling are:

随形冷却的优点是：

- Reduction of cycle time by over 30 %
- Improvement of process stability
- Reduction of correction loops
- Reduction of energy requirements
- Optimisation of moulded part quality

- 成型周期缩短高达30 %
- 工艺稳定性的提高
- 减少校正环路
- 降低能源需求
- 优化模具产品品质



The complex temperature control system is designed for a particularly high number of pieces with consistently good quality.

CONTURA COATING

复杂的温控系统适用于持续生产高品质产品的量产模具。



By applying the special polymer-based CONTURA® coating to the tempering channels, downtimes are avoided. An extremely stable production process is achieved and intervals for cleaning are significantly increased.

通过应用特殊的康图拉聚合物涂层到回火通道，来避免停机。实现了极其稳定的生产过程，并且大大增加了清洗间隔

Benefits at a glance: 优势一目了然

<p>>30% cyclotime reduction</p> <p>成型周期缩短30%以上</p>	<p>COPPER inlets for best performance</p> <p>最佳性能的铜质镶件</p>	<p>Elimination of elaborate POST-PROCESSING</p> <p>消除复杂的后部工艺</p>
<p>improved PROCESS STABILITY</p> <p>提升工艺稳定性</p>	<p>Significantly less waste</p> <p>显著减少浪费</p>	<p>optional performance GUARANTEE</p> <p>产品视觉保证</p>
<p>Particularly long service life due to CONTURA COATING</p> <p>通过康图拉涂层，产品具有超长的使用寿命</p>	<p>less WARPAGE</p> <p>翘曲较少</p>	<p>reduced CO₂ footprint</p> <p>减少二氧化碳排放</p>

CASE STUDY

大中华区经销商



苏州市默克尔液压系统有限公司
Suzhou Merkle Hydraulic System Co., Ltd.
苏州市工业园区唯新路50号益创科技园11幢2楼201室, 邮编215122
Room 201, 2nd Floor, 11th Building, Yichuang Science Park,
#50 Weixin Road, SIP, Suzhou 215122, P.R. China

Phone: +86 512 6296 9386
Mobile: +86 150 1385 6625
Email: info@ahpmerklechina.com

