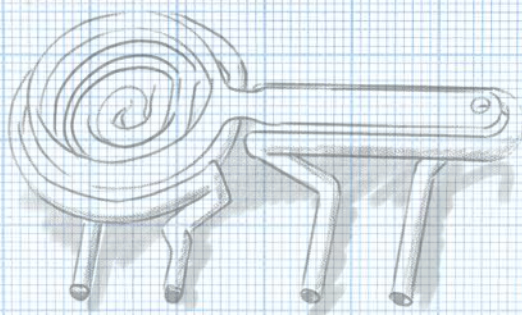
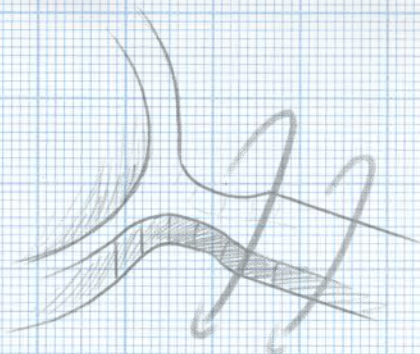
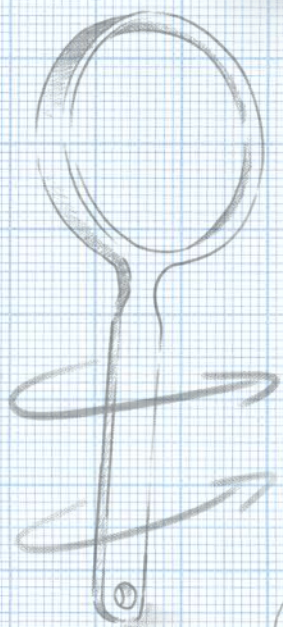


放大镜

The magnifying glass



OPTICS

CASE STUDY



Typical applications of variotherm technology:

- Injection or compression moulds or mould inserts with cooling channels close to the cavity
- Typical mould temperature ranges above 100 °C; up to max. 200 °C

Heating and cooling follows the injection cycle

- Up to 100 K temperature difference between heating and cooling mode on the cavity
- Able to significantly improve the quality of the moulded parts and/or the cycle time
- Easy to integrate into a standard tool

变温工艺的典型应用

- 带有近腔冷却通道的注塑模具或模具镶件
- 典型模具温度范围在100°C以上、200°C以下

加热和冷却遵循成型周期

- 腔体升温 and 降温之间的温差高达 100 K
- 显著提升模具产品品质和/或成型周期
- 易于集成到标准模具中



Variothermic temperature control device for achieving efficient cooling and heating of the tool insert.

变温控制装置适用于模具镶件的高效加热和冷却

Optical components 光学元件

Combination of variothermal process control and contour-following mould temperature control to improve the optical properties

Advantages of variothermal process control:

The warmer the cavity during the injection process,

- the better the holding pressure in thick-walled components
- the lower the risk of warping due to shrinkage
- the better the mechanical and optical properties
- the better the moulding of the optical surface
- the fewer the sink marks away from the sprue
- the fewer the visible weld lines

More cost-effective:

- Reduction of the rejection rate
- Reduction of the cycle time by up to 30 %

变温过程控制和随形冷却技术结合提升光学性能。

变温过程控制的优点:

注模过程中腔体越热

- 厚壁零件的保压压力保持更好
- 因收缩而导致翘曲变形的风险更低
- 机械和光学性能更好
- 产品表面光泽度更高
- 浇口附近的凹痕更少
- 明显的熔接痕更少

更具成本效益:

- 降低瑕疵品率
- 成型周期缩短高达30 %



The variothermal, conformal tempering channels are located on the cavity half, divided into two zones.

变温、随形冷却回火通道在模腔的一半处分为两个区域

Conformal cooling of the ejector half. Controllable in two different cycles.

顶出一半的随形冷却可在两个不同的成型周期中控制

Benefits at a glance: 优势一目了然

| | | |
|--|--|---|
| <p>20% cyclotime reduction 成型周期缩短20%</p> | <p>COPPER inlets for best performance 最佳性能的铜质镶件</p> | <p>BETTER OPTICAL QUALITY</p> |
| <p>short ROI period 投资回报期短</p> | <p>SURFACE improvement 表面改善</p> | |
| <p>controllable different CIRCUITS 可控不同回路</p> | <p>LESS scrap production 更少瑕疵品生产</p> | <p>optional performance GUARANTEE 产品视觉保证</p> |

CASE STUDY

大中华区经销商



苏州市默克尔液压系统有限公司
Suzhou Merkle Hydraulic System Co., Ltd.
苏州市工业园区唯新路50号益创科技园11幢2楼201室, 邮编215122
Room 201, 2nd Floor, 11th Building, Yichuang Science Park,
#50 Weixin Road, SIP, Suzhou 215122, P.R. China

Phone: +86 512 6296 9386
Mobile: +86 150 1385 6625
Email: info@ahpmerklechina.com

